



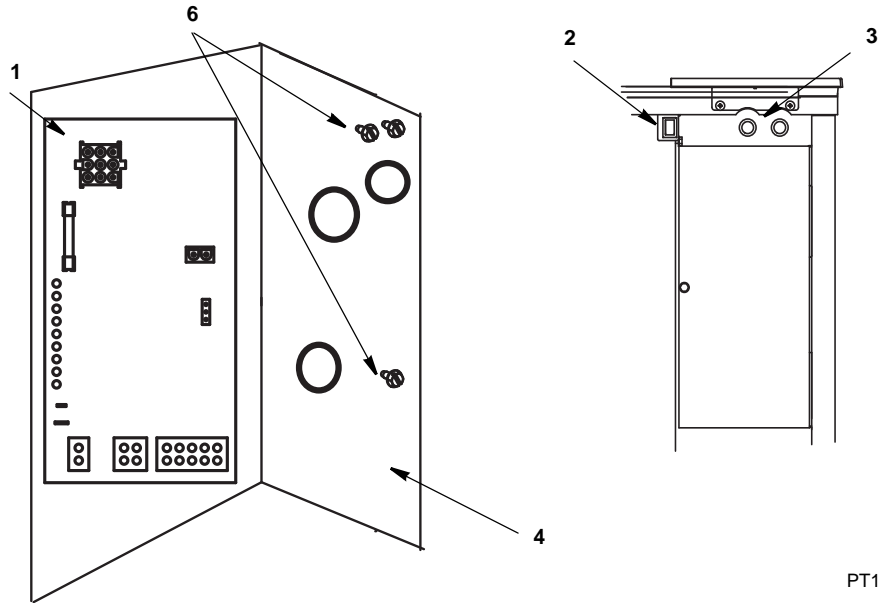
## **Ice Machine Parts List for Series S1200C Models**

**SD1272C**

**SY1274C**

**CVD1285**

## S1200C CONTROL BOX



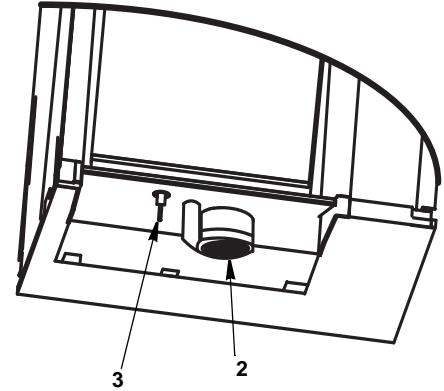
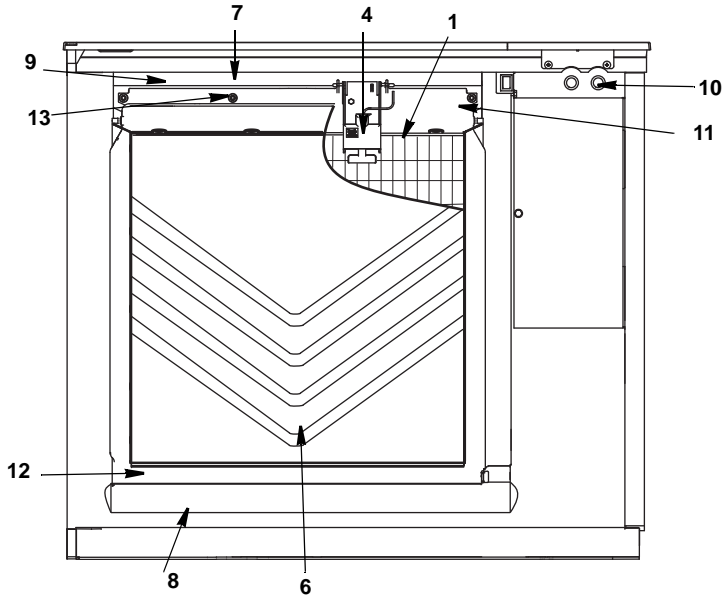
PT1392

### DESCRIPTION

	<b>PART NO.</b>
1 Control Board (for use with all voltages) . . . . .	20-0619-9
a. 7 Amp Fuse – Mounted on Control Board . . . . .	25-1100-3
2 <b>Toggle Switch</b> Only . . . . .	20-0793-9
a. Toggle Switch Wiring Harness . . . . .	20-0807-9
b. Toggle Switch Box . . . . .	40-1163-9
3 Refrigeration Service Valve Assembly . . . . .	83-7326-3
<b>Miscellaneous – Brackets, Screws, etc.</b>	
4 Control Box . . . . .	76-0214-3
a. Control Box Cover (Not shown) . . . . .	76-0215-3
5 Control Board Mounting Supports (Not shown) . . . . .	43-0225-3
6 Screw, #10-24 x .50 Ground . . . . .	52-0216-9
a. Star Washer . . . . .	55-7320-9
7 <b>Control Box Wiring Harness (Not shown)</b>	
a. 115V/60Hz/1Ph . . . . .	20-0776-9
b. 230V/50Hz/1Ph . . . . .	20-0777-9
8 Harvest Air Assist Pump Wiring Harness . . . . .	20-0743-9

† Refer to Cross Reference Guide

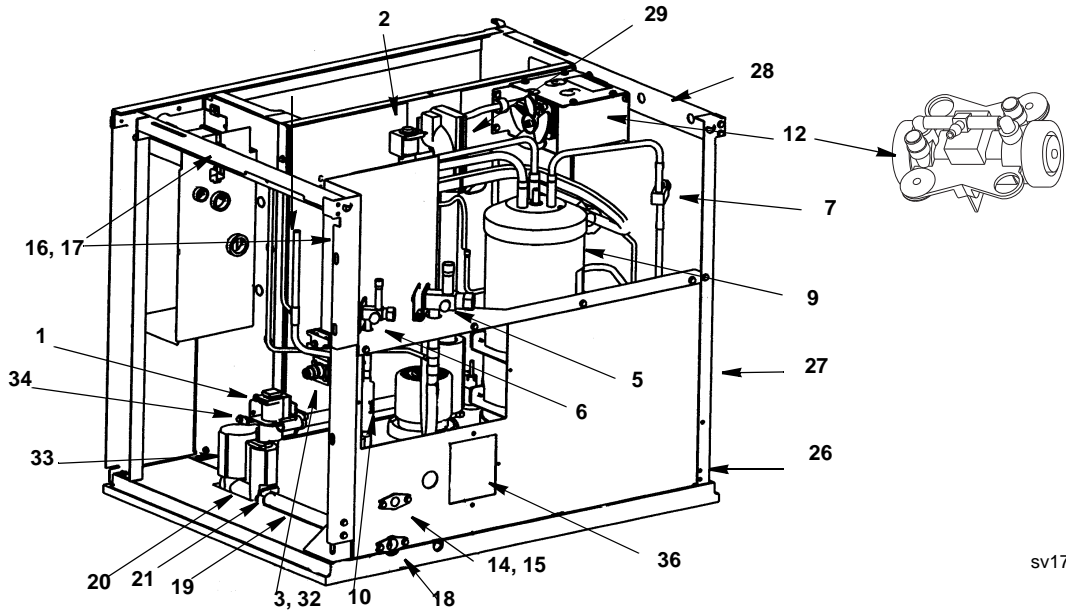
## S1200C EVAPORATOR COMPARTMENT



### DESCRIPTION

	DESCRIPTION		PART NO.
1	<b>Evaporator Assembly</b>		
	a. Dice Cube .....		76-0420-3
	b. Half Dice Cube .....		76-0421-3
2	<b>Water Pump</b>		
	a. 115V/60Hz.....		20-0848-9
	b. 230V/50 Hz.....		20-0811-9
3	<b>Water Level Probe</b>		
	a. Wire control box to probe .....		20-0654-9
	b. Ice Thickness Control Probe.....		20-0798-9
4	<b>Ice Thickness Control Probe</b> .....		20-0802-9
5	<b>Magnetic Bin Switch</b> .....		20-0681-9
6	<b>Water Curtain</b> .....		40-1448-9
7	<b>Water Distribution Assembly</b> .....		76-0219-3
	a. O-Rings (Back of Distribution Assembly) .....		50-0464-9
8	<b>Water Trough</b> .....		40-0360-9
9	<b>Evaporator Top Filler Panel</b> .....		30-0672-9
10	<b>Access Valve</b> .....		83-7326-3
11	<b>Evaporator Top Frame Assembly</b> .....		76-0220-3
12	<b>Water Diverter</b> .....		76-0221-3
<b>Miscellaneous – Brackets, Screws, etc.</b>			
13	<b>Screw, (Water Distribution Tube Mounting) each</b> .....		50-0479-9
	a. O-Ring.....		50-0462-9
14	<b>Screw, #12-16 x .687 (each-used to mount evaporator)</b> .....		50-0461-9
15	<b>Water Pump Base O-Ring</b> .....		50-0465-9
16	<b>Water Pump Outlet O-Ring</b> .....		50-0467-9
17	<b>Vinyl Tubing 0.625 ID (dump valve to drain adapter)</b> .....		000001382
	a. Insulation.....		603883-1

# S1200C REFRIGERATION COMPARTMENT



sv1754

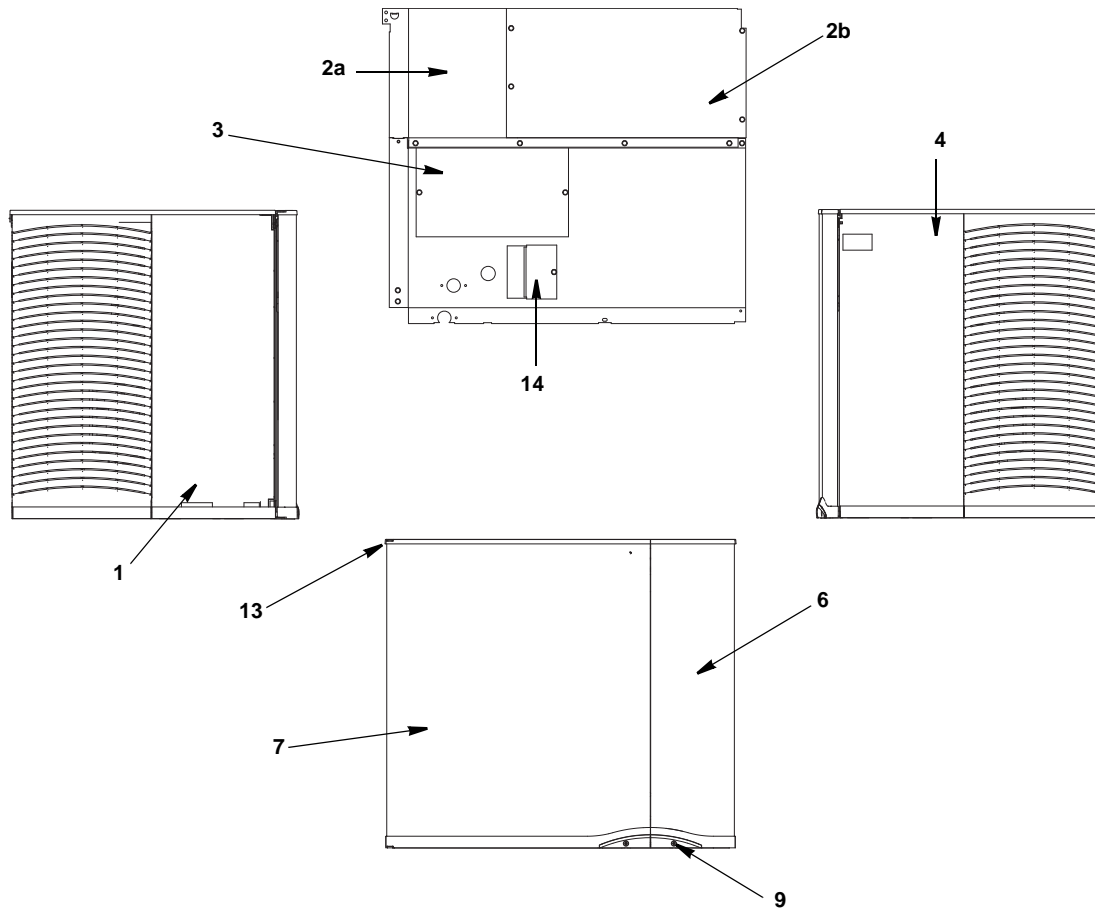
## DESCRIPTION

		<b>PART NO.</b>
1	<b>Water Dump Valve</b>	
	a. 208/230V / 60 Hz .....	000001768
	b. Dump Valve Rebuild Kit .....	No Longer Available
2	<b>Harvest Valve</b>	
	a. Solenoid Valve with Electrical Coil (115V) .....	76-0341-3
	b. Solenoid Valve with Coil (208/230V) .....	76-0422-3
	c. 115V/60 Hz Electrical Coil Only .....	20-0788-9
	d. 208/230V 50 Hz Electrical Coil Only .....	20-0907-9
3	<b>Water Inlet Valve</b>	
	a. Water Inlet Valve Including 115V/60 Hz Coil .....	000000403
	b. Water Inlet Valve Including 208/230V 50 Hz Electrical Coil .....	000000404
4	<b>Expansion Valve (Not Shown)</b>	
	a. After Serial Number 11070729 .....	76-0159-3
	b. Before Serial Number 110707329 .....	76-0225-3
5	<b>Manual Shut-off Valve Suction Line</b> .....	83-7328-3
6	<b>Manual Shut-off Valve Liquid Line</b> .....	83-7327-3
7	<b>Receiver Service Valve</b> .....	† 83-7316-9
	a. Valve Cap .....	56-5075-3
8	<b>Liquid Line Solenoid Valve</b>	
	a. Liquid Line Solenoid Valve Including 115V/60 Hz Coil (Danfoss) .....	76-3000-1
	b. 115V/60 Hz Coil Only Danfoss .....	000002048
	c. Liquid Line Solenoid Valve Including 208/230V 50 Hz Electrical Coil (Danfoss) .....	76-3006-1
	d. 208/230V 50 Hz Coil Only Danfoss .....	000002049
9	Receiver .....	76-2959-3
10	Check Valve .....	83-7315-9
11	Drier .....	89-3027-9
12	<b>Air Assist Pump</b>	
	a. Air Assist Pump 115V with bracket .....	76-0352-9
	b. Air Assist Pump 230V with bracket .....	000000443
	c. Manifold Tee (air pump tubing outlet) .....	40-1173-9

**Miscellaneous – Brackets, Screws, etc.**

13	Dump Valve Mounting Bracket . . . . .	605845-9
14	Water Inlet Valve Wing Adapter . . . . .	87-0609-3
15	Water Inlet Valve Wing Adapter Plastic Fitting . . . . .	13-6096-1
16	Right Corner Post Weldment . . . . .	606713-9
17	Right Top Channel . . . . .	606257-9
18	Water Drain Female Wing Adapter . . . . .	87-0608-3
19	Water Drain Clear Tubing, .625 ID (12 inches) . . . . .	44-2038-3
20	Dump Valve Tubing (3.25 inches) . . . . .	44-2038-3
21	Clamp, Water Drain . . . . .	56-5070-9
22	Clamp, Expansion Valve Bulb . . . . .	56-5052-9
23	Copper Bulb Strap . . . . .	30-0081-3
24	Expansion Valve Body Insulation Boot . . . . .	40-1329-9
25	Expansion Valve Bulb Insulation Boot . . . . .	40-0720-3
26	Screw, #10-24 x .50 . . . . .	52-0206-9
27	Left Corner Post Weldment . . . . .	606599-9
28	Left Top Channel . . . . .	606864-9
29	Overmolded Tube Assembly (vinyl tubing from distribution tube to water pump & dump valve) . . . . .	000000871
	a. Clamp .859/.989 ID . . . . .	56-5060-3
	b. Clamp .799/.899 ID . . . . .	56-5070-3
30	Water Inlet Valve Tubing . . . . .	40-1043-9
31	Connector (Water Inlet Valve) . . . . .	13-6098-9
32	Water Inlet Valve Bracket . . . . .	605845-9
33	<b>Check Valve Replacement</b> (includes water diverter, vinyl tubing & insulation) . . . . .	000002473
34	Bin Switch . . . . .	20-0681-9
35	Receiver Mounting	
	a. Bracket . . . . .	600056-1
	b. Strap . . . . .	630721-4
<b>36</b>	<b>Electrical Box on Rear of Ice Machine</b>	
	a. Box . . . . .	606728-9
	b. Terminal Block 3 Pole . . . . .	20-0614-9
	c. Groundscrew #10-24 x .50 . . . . .	52-0216-9
37	Holder, Water Level Probe . . . . .	20-0655-9
	a. Screw (to mount water level probe holder) . . . . .	52-0206-9

## S1200C HEAD SECTION PANELS



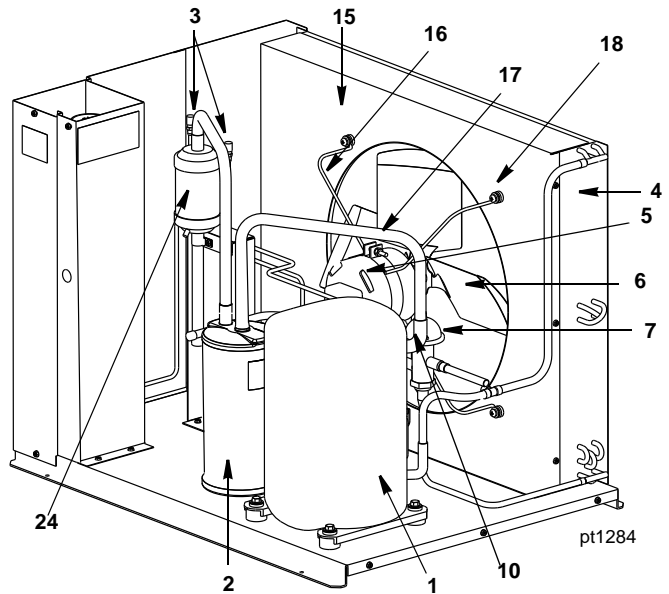
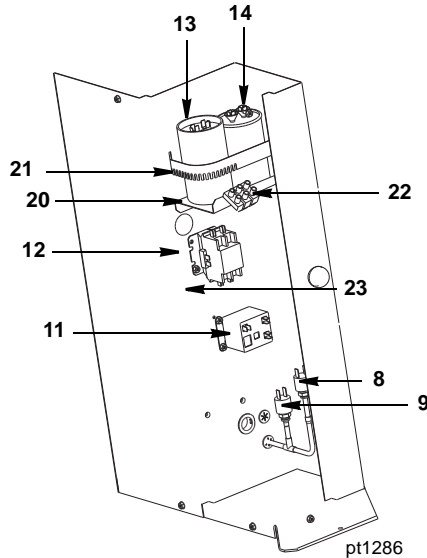
### DESCRIPTION

	<b>PART NO.</b>
1 Left Side Panel .....	606057-9
2 Top Back Panels	
a. Left Side .....	606924-9
b. Right Side .....	606925-9
3 Bottom Back Panel .....	605968-9
4 Right Side Panel .....	606056-9
5 Top Cover (not shown) .....	40-1154-9
6 Right Door .....	606250-9
7 Left Door .....	606249-9
8 Coupling Panel .....	606280-9

### Miscellaneous – Brackets, Screws, etc.

9 Right/Left Door Screw .....	50-0489-9
10 Front Top Support (Not shown) .....	000000295
a. Mounting Screw Left Side 8-32 x 1.0 .....	50-0537-9
b. Mounting Screw Right Side 10-24 x .50 .....	52-0209-9
c. Front Panel Strike .....	30-0602-9
11 Bottom Door Frame .....	76-0226-3
a. Mounting Screw Left Side 8-32 x 1 .....	50-0537-9
b. Mounting Screw Right Side 10/24 x .50 PHIL .....	52-0209-9
12 Door Catch Bracket (RHD) .....	606236-9
a. Mounting Screw 8-32 x .50 Phil .....	50-2624-9
13 Left Door Pivot Leaf Hinge (Top or Bottom) .....	30-0557-9
a. Mounting Screw 8-32 x 1TCS-23 PHIL/FL .....	50-0537-9
14 Electrical Connection Box Cover .....	606729-9
15 Sachet Holder (inside left door) .....	40-0459-9
a. Screws .....	50-0479-9

# CVD1285 CONDENSING UNIT

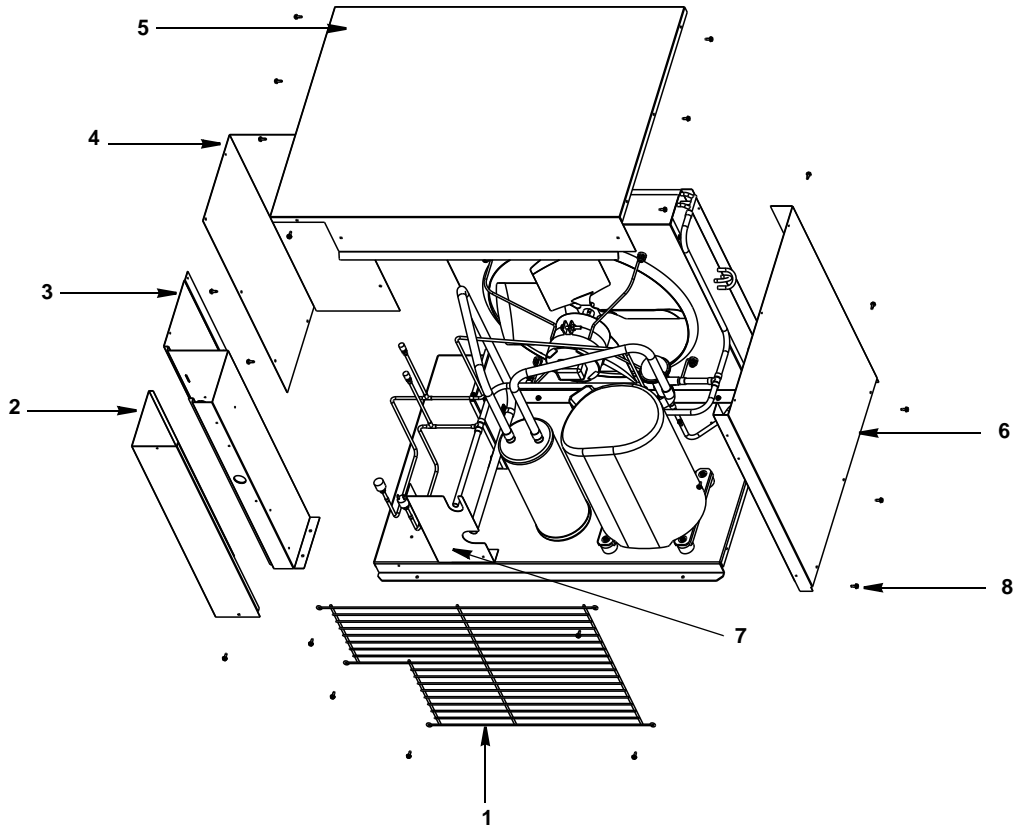


## DESCRIPTION

	<b>PART NO.</b>
<b>1 Compressor (After Serial Number 110706336)</b>	
a. 208-230V/60 Hz/1 Ph .....	000002366
b. 208-230V/60 Hz/3 Ph .....	000002367
c. 208-230V/50 Hz/1 Ph .....	000002368
<b>1 Compressor (Before Serial Number 110706336)</b>	
a. 208-230V/60 Hz/1 Ph .....	76-0321-3
b. 208-230V/60 Hz/3 Ph .....	76-0322-3
c. 208-230V/50 Hz/1 Ph .....	76-0323-3
<b>2 Suction Accumulator</b> .....	82-5143-3
<b>3 Access Valve</b> .....	83-7325-3
<b>4 Air-Cooled Condenser</b> .....	88-5139-3
<b>5 Fan Motor</b>	
a. 208-230V/60 Hz/1 Ph (or 3 Ph) .....	† 20-0018-9
b. 208-230V/50 Hz/1 Ph .....	† 20-0058-3
<b>6 Fan Blade</b> .....	24-1611-3
<b>7 Head Pressure Control Valve</b>	
a. After Serial Number 110706336 .....	000001982
b. Before Serial Number 110706336 .....	83-6810-3
<b>8 Fan Cycling Control</b> .....	† 20-0126-3
<b>9 High Pressure Cut-Out Control</b> .....	† 20-0124-3
<b>10 Low Pressure Cut-Out Control</b> .....	20-0222-9
<b>11 Start Relay 50-60 Hz/1 Ph</b> .....	20-0755-9
<b>12 Contactor</b>	
a. 50-60 Hz/1 Ph .....	20-0660-9
b. 60 Hz/3 Ph .....	20-0661-9
<b>13 Start Capacitor 50-60 Hz/1 Ph</b>	
a. After Serial Number 110706336 .....	85-0384-3
b. Before Serial Number 110706336 .....	† 85-0385-3
<b>14 Run Capacitor</b>	
a. 60 Hz/1 Ph & 50 Hz/1 Ph Only (After Serial Number 110706336) .....	† 20-1013-3
b. 50 Hz/1 Ph Only (Before Serial Number 110706336) .....	000001395
<b>Miscellaneous – Brackets, Screws, etc.</b>	
<b>15 Fan Shroud</b> .....	603449-1
<b>16 Fan Motor Mounting Bracket</b> .....	30-0682-3
<b>17 Fan Motor Mounting Screw</b> .....	† 50-3358-9
a. Fan Motor Mounting Lockwasher .....	† 55-4511-9
b. Fan Motor Mounting Hexnut .....	† 54-2952-9
<b>18 Fan Bracket Mounting Screw</b> .....	50-3238-9
a. Fan Bracket Mounting Lockwasher .....	† 55-4511-9
b. Fan Bracket Mounting Flatwasher .....	† 55-7305-9
c. Fan Bracket Mounting Rubber Wellnut .....	† 54-2955-9
<b>19 Screw, #10-24 x .50 (Used for Panel Attachment – Not shown)</b> .....	† 52-0206-9
<b>20 Capacitor Mounting Bracket</b> .....	603498-1
<b>21 Capacitor Mounting Strap</b> .....	602160-1
<b>22 Terminal Block (50 Hz Only)</b> .....	20-0614-3
<b>23 Ground Screw</b> .....	† 52-0216-9
<b>24 Suction Line Filter</b> .....	82-5054-9
<b>25 Copeland Plug Assembly Wiring Harness, 230V/50-60Hz/1-3 Ph</b> .....	20-0761-9

† Refer to Cross Reference Guide

# CVD1285 CONDENSING UNIT PANELS



pt1287

**DESCRIPTION**

	<b>DESCRIPTION</b>	<b>PART NO.</b>
1	Condenser Fan Guard . . . . .	34-0689-3
2	Control Box Cover . . . . .	† 604017-1
3	Control Box Panel. . . . .	603707-1
4	Left Side Panel . . . . .	603729-1
5	Cover Top . . . . .	603475-1
6	Right Side Panel. . . . .	603470-1
7	Tube Shield. . . . .	† 604226-1
 <b>Miscellaneous – Brackets, Screws, etc.</b>		
8	Screw, #10-24 x .50 Hex. . . . .	† 52-0206-9