



Ice Machine Parts List for Series S1800 Models

SR1800A

SD1892N

SR1801W

SY1804A

SR1890N

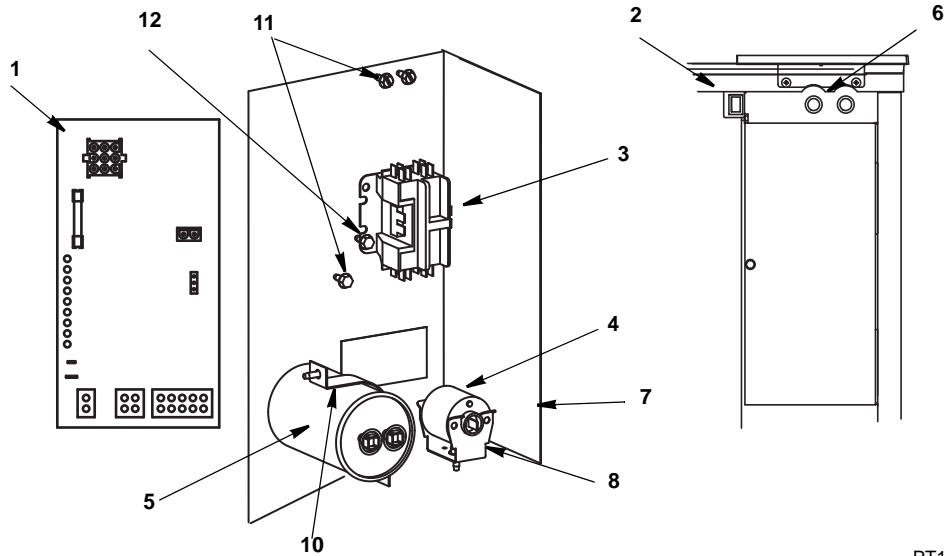
SY1805W

SD1802A

SY1894N

SD1803W

S1800 CONTROL BOX



PT1388

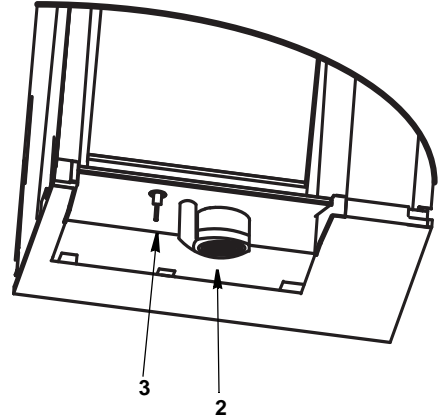
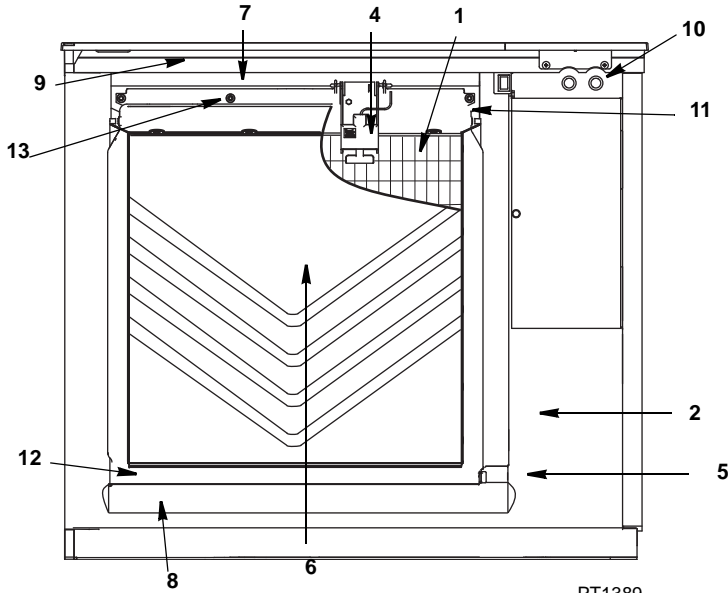
DESCRIPTION

| | PART NO. |
|---|-----------------|
| 1 Control Board (for use with all voltages) | 20-0619-9 |
| a. 7 Amp Fuse – Mounted on Control Board | 25-1100-3 |
| 2 Toggle Switch Only | 20-0793-9 |
| a. Toggle Switch Wiring Harness | 20-0906-9 |
| b. Toggle Switch Box | 40-1163-9 |
| 3 Contactor | |
| a. 208-230V/60 Hz/1 Ph or 230V/50 Hz 1Ph. | 20-0908-9 |
| b. 208-230V/60 Hz/3 Ph | 20-0661-9 |
| 4 P.T.C.R. Compressor Starter. | 85-0491-3 |
| 5 Compressor Run Capacitor 208-230V/50/60 Hz/1 Ph). | 000000028 |
| 6 Refrigeration Service Valve Assembly | 83-7326-3 |

Miscellaneous – Brackets, Screws, etc.

| | |
|--|-----------|
| 7 Control Box | 76-0214-3 |
| a. Control Box Cover (Not shown). | 76-0315-3 |
| b. Control Box Bracket. | 606724-9 |
| 8 P.T.C.R. Compressor Starter Mounting Bracket | 85-0495-3 |
| 9 Control Board Mounting Supports (Not shown) | 43-0225-3 |
| 10 Capacitor Mounting Strap | 602495-1 |
| 11 Screw, #10-24 x .50 Ground | 52-0216-9 |
| a. Star Washer. | 55-7320-9 |
| 12 Screw, #10-24 x .50 | 52-0206-9 |
| 13 Control Box Wiring Harness (Not shown) | |
| a. 230/60/1. | 20-0899-9 |
| b. 230/60/3. | 20-0897-9 |
| c. 230/50/1. | 20-0898-9 |
| d. Harvest Air Assist Pump | 20-0900-9 |

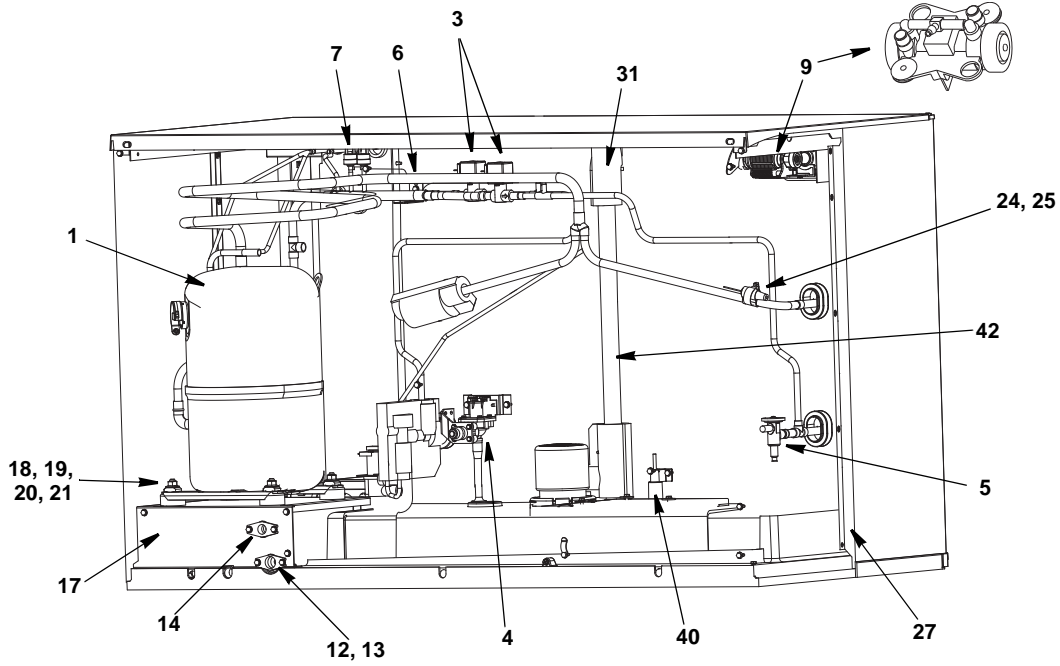
S1800 EVAPORATOR COMPARTMENT



DESCRIPTION

| | | | PART NO. |
|---|---|--|-----------------|
| 1 | Evaporator Assembly | | |
| | a. Regular Cube | | 76-0325-3 |
| | b. Dice Cube | | 76-0326-3 |
| | c. Half Dice Cube | | 76-0327-1 |
| 2 | Water Pump | | |
| | a. 230V/60 Hz | | 82-5270-9 |
| | b. 230V/50 Hz | | 00000259 |
| 3 | Water Level Probe | | |
| | a. Wire, control box to probe | | 20-0654-9 |
| 4 | Ice Thickness Control Probe | | 20-0916-9 |
| 5 | Magnetic Bin Switch | | 20-0802-9 |
| 6 | Water Curtain | | 20-0681-9 |
| 7 | Water Distribution Tube Assembly | | 40-1272-9 |
| | a. O-Rings (Back of Distribution Assembly) | | 76-0319-3 |
| 8 | Water Trough | | 50-0464-9 |
| 9 | Evaporator Top Filler Panel | | 40-0915-9 |
| | a. Stainless Steel Clamp | | 00000292 |
| | b. Clamp Screw | | 606333-9 |
| 10 | Access Valve | | 52-0209-9 |
| 11 | Evaporator Top Frame Assembly | | 83-7326-3 |
| 12 | Water Diverter | | 76-0320-3 |
| | | | 76-0318-3 |
| Miscellaneous – Brackets, Screws, etc. | | | |
| 13 | Screw, (Water Distribution Tube Mounting) Each | | 50-0479-9 |
| | a. O-Ring | | 50-0462-9 |
| 14 | Screw, #12-16 x .687 Used to Mount Evaporator (Each) | | 50-0461-9 |
| 15 | Water Pump Base O-Ring | | 50-0465-9 |
| 16 | Water Pump Outlet O-Ring | | 50-0467-9 |
| 17 | Vinyl Tubing 0.625 ID (dump valve to drain adapter) | | 000001382 |
| | a. Insulation | | 603883-1 |

S1800 REFRIGERATION COMPARTMENT – COMMON PARTS



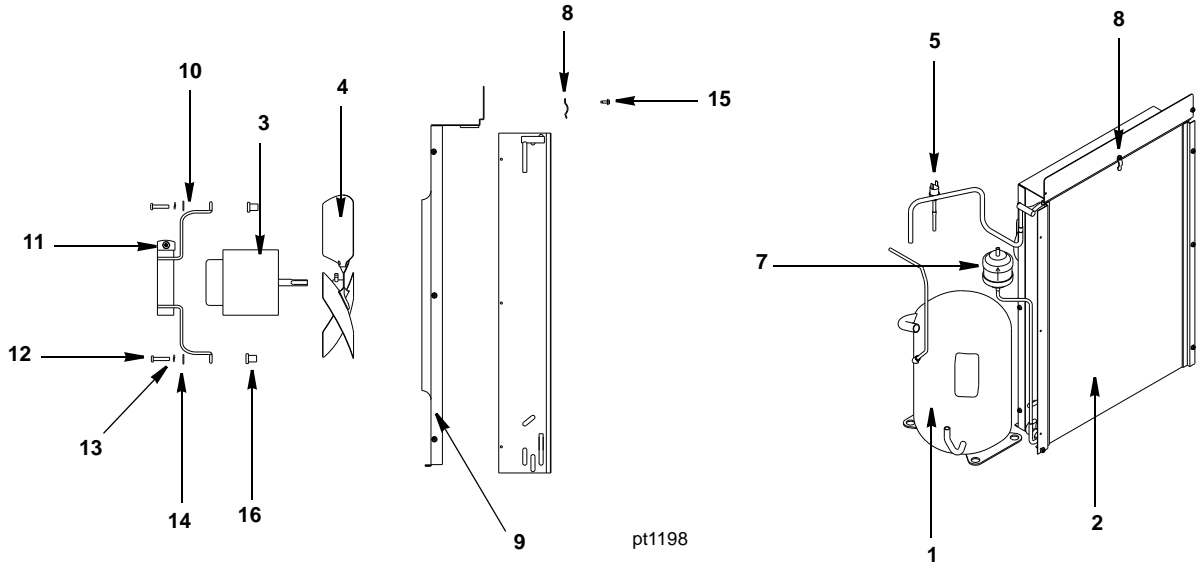
DESCRIPTION

| | | PART NO. |
|--|---|---------------------|
| 1 Compressor | | |
| a. | 208-230V/60 Hz/1 Ph | 76-0328-3 |
| b. | 208-230V/60 Hz/3 Ph | 76-0329-3 |
| c. | 230V/50 Hz/1 Ph | 76-0330-3 |
| 2 Water Dump Valve | | |
| a. | Dump Valve, 208-230V/50-60 Hz | 000001768 |
| b. | Dump Valve Rebuild Kit. | No Longer Available |
| 3 Harvest Valve | | |
| a. | Harvest Valve Including 208/230V 50/60 Hz Electrical Coil Danfoss | 76-3010-1 |
| b. | Harvest Valve 208/230V 50/60 Hz Coil Only Danfoss. | 000002049 |
| 4 Water Inlet Valve | | |
| a. | Water Inlet Valve Including 208-240V/50-60 Hz Coil. | 000000380 |
| 5 Expansion Valve | | |
| a. | Expansion Valve Body Insulation Boot | 76-0225-3 |
| b. | Expansion Valve Bulb Insulation Boot | 40-1329-9 |
| | | 40-0720-3 |
| 6 Manifold Strainer (in front of hot gas valve) | | 82-5097-3 |
| 7 High Pressure Cut-out (Auto Reset) | | 20-0124-3 |
| 8 Electrical Box on Rear of Ice Machine | | |
| a. | Box | 606728-9 |
| b. | Terminal Block 3 Pole | 20-0614-3 |
| c. | Groundscrew #10-24 x .50 | 52-0216-9 |
| 9 Air Compressor | | |
| a. | Air Compressor Pumps 230V with brackets | 000000444 |
| b. | Manifold Tee (Air Pump Tubing Outlet) | 40-0457-9 |
| 10 Compressor Compartment Wiring Harness | | |
| a. | Water | 20-0901-9 |
| b. | Air | 20-0902-9 |
| c. | Remote | 20-0903-9 |

Miscellaneous – Brackets, Screws, etc.

| | | |
|----|---|-----------|
| 11 | Dump Valve Mounting Bracket | 605845-9 |
| 12 | Water Inlet Valve Wing Adapter | 87-0608-3 |
| 13 | Water Inlet Valve Wing Adapter Plastic Fitting | 13-6096-1 |
| 14 | Water Drain Female Wing Adapter | 87-0609-3 |
| 15 | Water Drain Clear Tubing, .625 ID x 12 inches | 44-2038-3 |
| 16 | Dump Valve Tubing 3.25 inches. | 44-2038-3 |
| 17 | Compressor Mounting Base. | 606590-9 |
| 18 | Compressor Mounting Rubber Grommet. | 85-0485-9 |
| 19 | Compressor Mounting Sleeve | 85-0394-9 |
| 20 | Compressor Mounting Bolt. | 50-0481-9 |
| 21 | Compressor Mounting Nut | 50-0482-9 |
| 22 | Compressor Wiring Harness | 20-0623-9 |
| 23 | Clamp, Water Drain | 56-5070-9 |
| 24 | Clamp, Expansion Valve Bulb | 56-5052-9 |
| 25 | Copper Bulb Strap | 30-0050-3 |
| 26 | Screw, #10-24 x .50 | 52-0206-9 |
| 27 | Left Corner Post | 606599-9 |
| 28 | Left Top Channel | 606864-9 |
| 29 | Right Corner Post. | 606713-9 |
| 30 | Right Top Channel | 606257-9 |
| 31 | Overmolded Tube Assembly (vinyl tubing from distribution tube to water pump & dump valve) | 000000873 |
| | a. Clamp .859/.989 ID. | 56-5060-3 |
| | b. Clamp .799/.899 ID. | 56-5070-3 |
| 32 | Water Inlet Valve Tubing | 40-1043-9 |
| 33 | Connector Water Inlet Valve. | 13-6098-9 |
| 34 | Water Inlet Valve Bracket. | 606644-9 |
| 35 | Check Valve Replacement (includes water diverter, vinyl tubing & insulation) | 000002474 |
| 36 | Holder, Water Level Probe | 20-0655-9 |
| | a. Screw to Mount Water Level Probe Holder. | 52-0206-9 |
| 37 | Molded Vinyl Tube | 40-1425-9 |

S1800 REFRIGERATION COMPARTMENT – AIR-COOLED



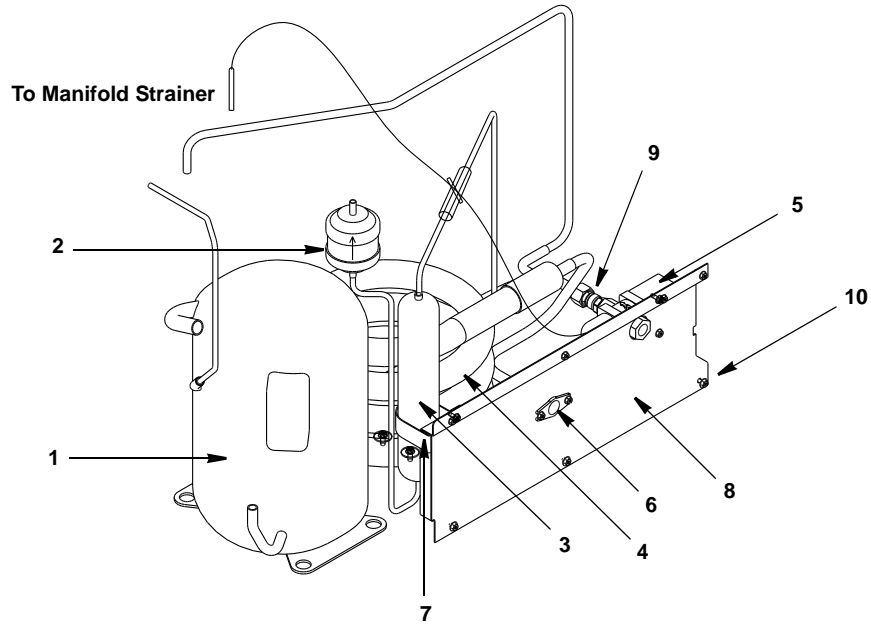
DESCRIPTION

| | PART NO. |
|--|-----------------|
| 1 Compressor (Refer to COMMON PARTS Page) | Page S1800-4 |
| 2 Air Condenser | 88-5129-3 |
| 3 Fan Motor (208-230V/60 Hz or 230V/50 Hz) | 76-2673-3 |
| 4 Fan Blade | 24-1611-3 |
| 5 Fan Cycling Control | † 20-0127-3 |
| 6 Air Filter (Not shown) | 40-4025-3 |
| 7 Drier | 89-3027-9 |

Miscellaneous – Brackets, Screws, etc.

| | |
|--|-------------|
| 8 Air Filter Clip | † 56-5069-9 |
| 9 Fan Shroud | 606597-9 |
| 10 Fan Motor Mounting Bracket | 30-0682-3 |
| 11 Fan Motor Mounting Screw | † 50-3358-9 |
| a. Fan Motor Mounting Lockwasher | † 55-4510-9 |
| b. Fan Motor Mounting Hexnut | † 54-2952-9 |
| 12 Fan Bracket Mounting Screw | 50-3238-9 |
| 13 Fan Bracket Mounting Lockwasher | † 55-4510-9 |
| 14 Fan Bracket Mounting Flatwasher | † 55-7305-9 |
| 15 Screw, #10-24 x .50 | † 52-0206-9 |
| 16 Wellnut | 54-2955-9 |

S1800 REFRIGERATION COMPARTMENT – WATER-COOLED



pt1200

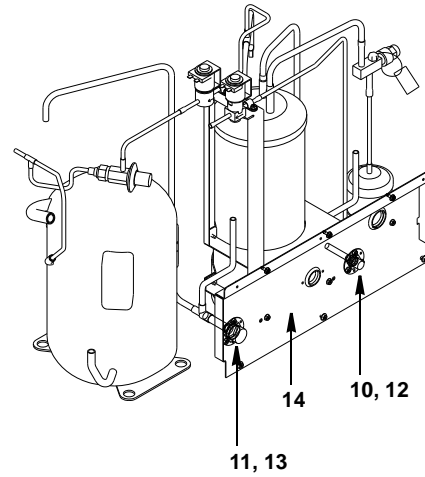
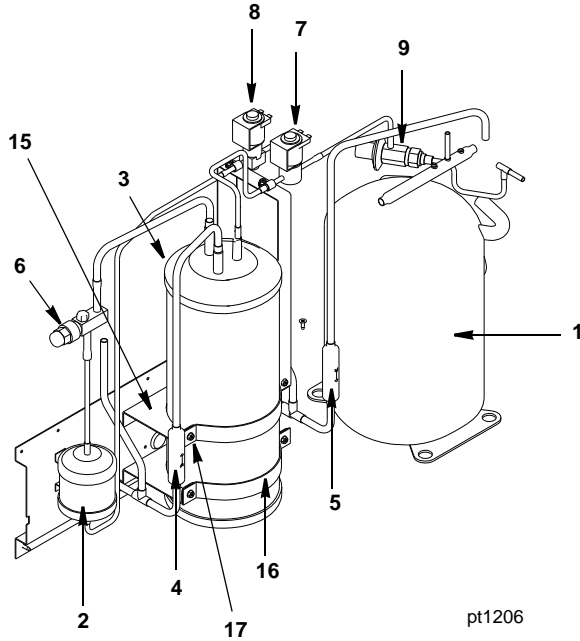
DESCRIPTION

| DESCRIPTION | PART NO. |
|---|--------------|
| 1 Compressor (Refer to COMMON PARTS Page) | Page S1800-4 |
| 2 Drier | 89-3027-9 |
| 3 Receiver | 89-0035-3 |
| 4 Water-Cooled Condenser | 000001508 |
| 5 Water Regulating Valve | 83-7212-3 |
| 6 Water Drain Female Wing Adapter | 87-0608-3 |

Miscellaneous – Brackets, Screws, etc.

| | |
|-----------------------------------|-----------|
| 7 Receiver Strap | 600054-1 |
| 8 Back Panel | 606682-9 |
| 9 Elbow .50 MF x .50 NPT | 50-0545-3 |
| 10 Screw, #10-24 x .50 | 52-0206-3 |
| 11 Washer | 55-7341-9 |
| 12 Base, Water Condenser/Receiver | 606684-1 |

S1800 REFRIGERATION COMPARTMENT – REMOTE

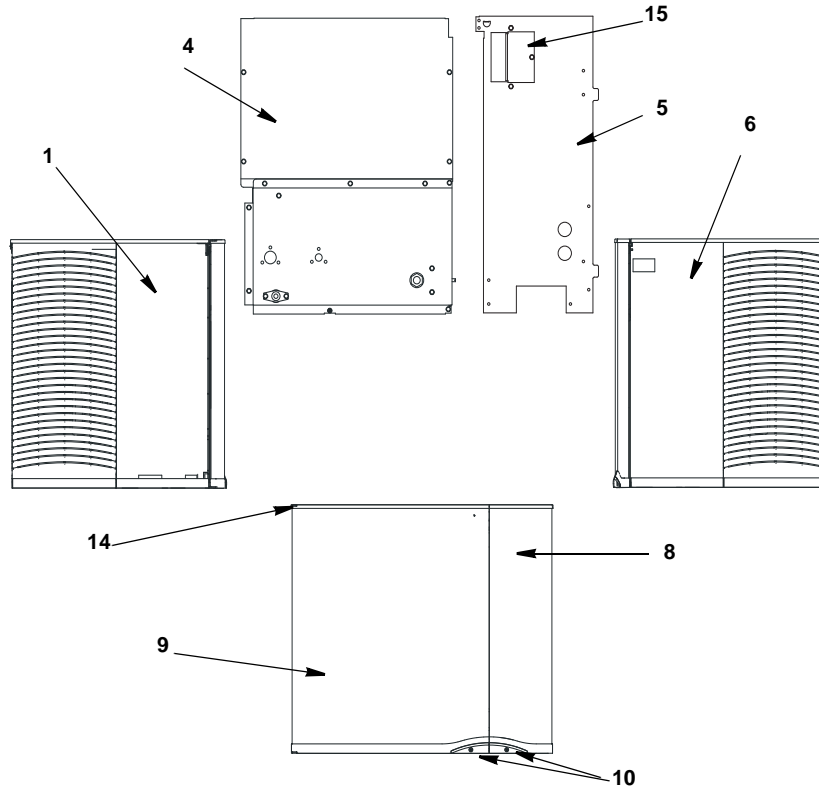


DESCRIPTION

| | PART NO. |
|--|-----------------|
| 1 Compressor (Refer to COMMON PARTS) | Page S1800-4 |
| 2 Drier | 89-3027-9 |
| 3 Receiver | 89-0001-9 |
| 4 Magni-Check Valve 3/8" | 83-7314-9 |
| 5 Magni-Check Valve 1/2" | 83-7315-3 |
| 6 Refrigeration Service Valve | † 83-7316-9 |
| a. Cap for Refrigeration Service Valve | 56-5075-9 |
| 7 Harvest Pressure Regulating Solenoid (HPR) Valve | |
| a. HPR Valve Including 208/230V 50/60 Hz Electrical Coil (Danfoss). | 76-3006-1 |
| b. HPR Valve 208/230V 50/60 Hz Coil Only Danfoss | 000002049 |
| 8 Liquid Line Solenoid (LLS) Valve | |
| a. LLS Valve Including 208/230V 50/60 Hz Electrical Coil (Danfoss) | 76-3009-1 |
| b. LLS Valve 208/230V 50/60 Hz Coil Only Danfoss. | 000002049 |
| 9 Harvest Pressure Regulating Valve (HPR) | † 83-6779-3 |
| 10 Coupling – Male, 5/8-18 | † 83-6034-3 |
| 11 Coupling – Male, 1-1/6-12 | † 83-6035-3 |
| Miscellaneous – Brackets, Screws, etc. | |
| 12 Coupling Mounting Flange for 5/8-18 | 83-6005-3 |
| 13 Coupling Mounting Flange for 1-1/16-12 | 83-6006-3 |
| 14 Back Panel | 606682-9 |
| 15 Receiver Mounting Bracket. | 600056-1 |
| 16 Receiver Mounting Strap | 630721-4 |
| 17 Screw, #10-24 x .50 | † 52-0206-9 |

† Refer to Cross Reference Guide

S1800 PANELS



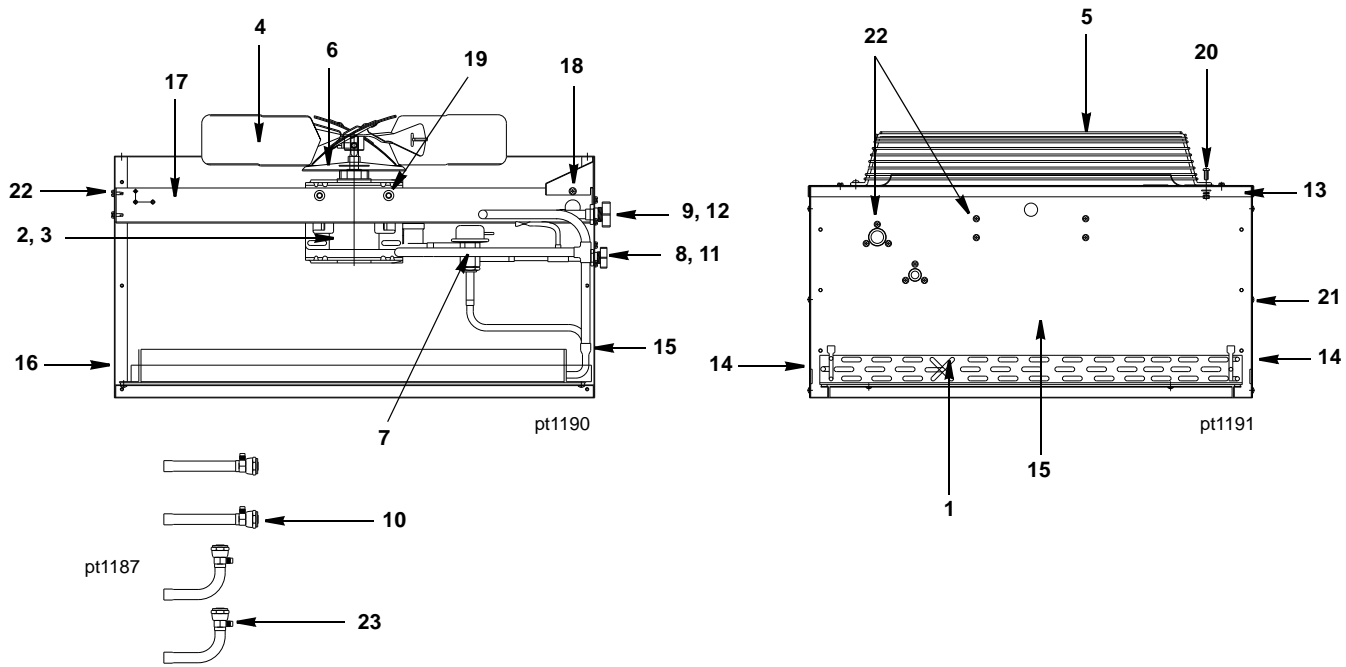
DESCRIPTION

| DESCRIPTION | PART NO. |
|-------------------------------------|-----------|
| 1 Left Side Panel | 606057-9 |
| 2 Air Baffle | 607137-9 |
| 3 Air Filter (Not shown) | 40-4025-3 |
| 4 Back Panel, Remote or Water | 606714-9 |
| 5 Back Panel, Air | 606715-9 |
| 6 Right Side Panel | 606056-9 |
| 7 Top Cover (Not shown) | 40-1203-9 |
| 8 Right Door | 606283-9 |
| 9 Left Door | 606282-9 |

Miscellaneous – Brackets, Screws, etc.

| | |
|---|-----------|
| 10 Right/Left Door Screw | 50-0489-9 |
| 11 Front Top Support (Not shown) | 30-0574-9 |
| a. Mounting Screw Left Side 8-32 x 1 | 50-0537-9 |
| b. Mounting Screw Right Side 10-24 x .50 | 50-0509-9 |
| c. Front Panel Strike | 30-0602-9 |
| 12 Bottom Door Frame | 40-1188-9 |
| a. Mounting Screw Left Side 8-32 x 1 PHIL | 50-0537-9 |
| b. Mounting Screw Right Side 10/24 x .50 PHIL | 52-0209-9 |
| 13 Door Catch Bracket (RHD) | 606236-9 |
| a. Mounting Screw 8-32 x .50 Phil | 50-2624-9 |
| 14 Left Door Pivot Leaf Hinge (Top or Bottom) | 30-0557-9 |
| a. Mounting Screw 8-32 x 1 PHIL | 50-0537-9 |
| 15 Electrical Connection Box Cover | 606729-9 |
| 16 Top Cover Bracket | 606404-9 |
| 17 Sachet Holder (inside left door) | 40-0459-9 |
| a. Screws | 50-0479-9 |

JC1395 REMOTE CONDENSER (USED WITH S1800 REMOTE ICE MACHINES)



DESCRIPTION

| DESCRIPTION | PART NO. |
|--|---------------------|
| 1 Air Condenser | 88-5090-3 |
| 2 Fan Motor (208-230V 50/60 Hz/1 Ph). | † 76-2941-3 |
| 3 Fan Motor Run Capacitor (Emerson) | 85-0458-3 |
| 3 Fan Motor Run Capacitor (Magnatec) | No Longer Available |
| 4 Fan Blade | 24-1611-3 |
| 5 Fan Guard. | 34-0064-3 |
| 6 Rain Slinger | 24-1505-3 |
| 7 Head Pressure Control | 83-6809-3 |
| 8 Coupling – Male, 5/8-18 | † 83-6034-3 |
| 9 Coupling – Male, 1-1/6-12 | † 83-6035-3 |
| 10 Female Line Set Coupling Kit (Sold as Finished Goods Sales Kit) | Sales K0129 |

Miscellaneous – Brackets, Screws, etc.

| | |
|--|-------------|
| 11 Coupling Mounting Flange (for 5/8-18) | 83-6005-3 |
| 12 Coupling Mounting Flange (for 1-1/16-12) | 83-6006-3 |
| 13 Top Cover | 601789-1 |
| 14 Panel – Side | † 601790-1 |
| 15 Panel – Rear | 601791-1 |
| 16 Panel – Front | † 601792-1 |
| 17 Fan Motor Mounting Bracket | † 601768-1 |
| 18 Electrical Box Cover | † 601776-1 |
| 19 Fan Motor Mounting Screw (5/16-18 x 5/8) | † 50-3565-9 |
| a. Fan Motor Mounting Flatwasher | † 55-7309-9 |
| b. Fan Motor Mounting Lockwasher | † 55-7313-9 |
| c. Fan Motor Mounting Hexnut | 54-2975-9 |
| 20 Fan Guard Mounting Screw (1/4-20 x 5/8) | † 50-3345-9 |
| a. Fan Guard Mounting Flatwasher | † 55-7304-9 |
| b. Fan Guard Mounting Lockwasher | † 55-4511-9 |
| c. Fan Guard Mounting Hexnut | † 54-2952-9 |
| 21 Panel/Condenser Mounting Screw (#8 x 1/2) | † 51-2153-9 |
| a. Panel/Condenser Mounting Lockwasher | † 55-4459-9 |
| 22 Screw (#10-24 x .62) | † 52-0205-9 |
| 23 Valve Cores (used in linesets) | 76-2684-3 |
| 24 Legs (Not shown) | † 601769-1 |

† Refer to Cross Reference Guide